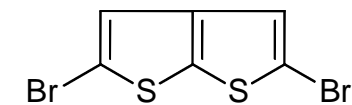


$^1\text{H-NMR}$

Product No. D4032

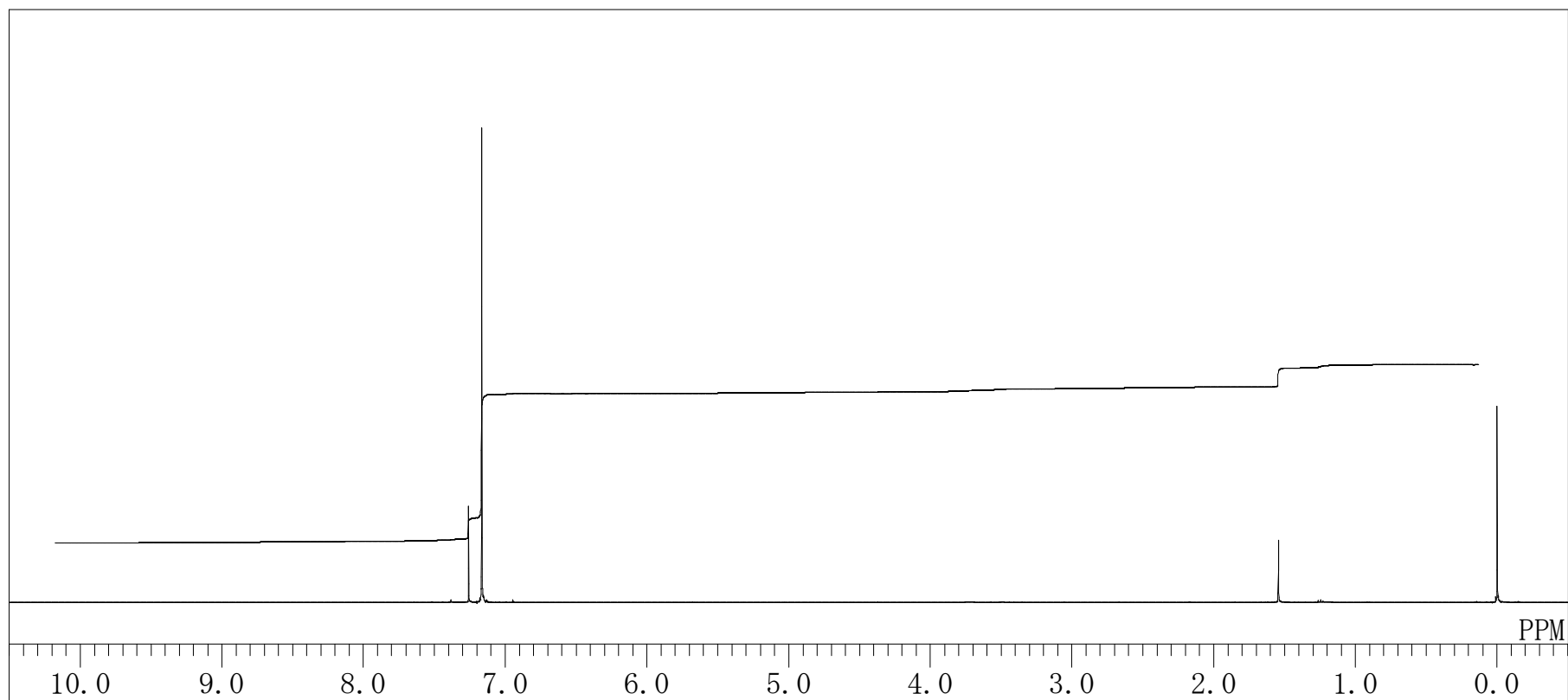
2,5-Dibromothiopheno[2,3-b]thiophene



Solvent : CDCl_3

Internal Standard : $\text{Si}(\text{CH}_3)_4$

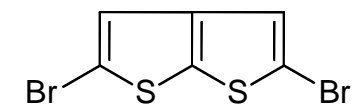
Measured Temperature : 21.7°C



¹³C-NMR

Product No. D4032

2,5-Dibromothiopheno[2,3-*b*]thiophene



Solvent : CDCl₃

Internal Standard : CDCl₃

Measured Temperature : 21.6 °C

