

$^1\text{H-NMR}$

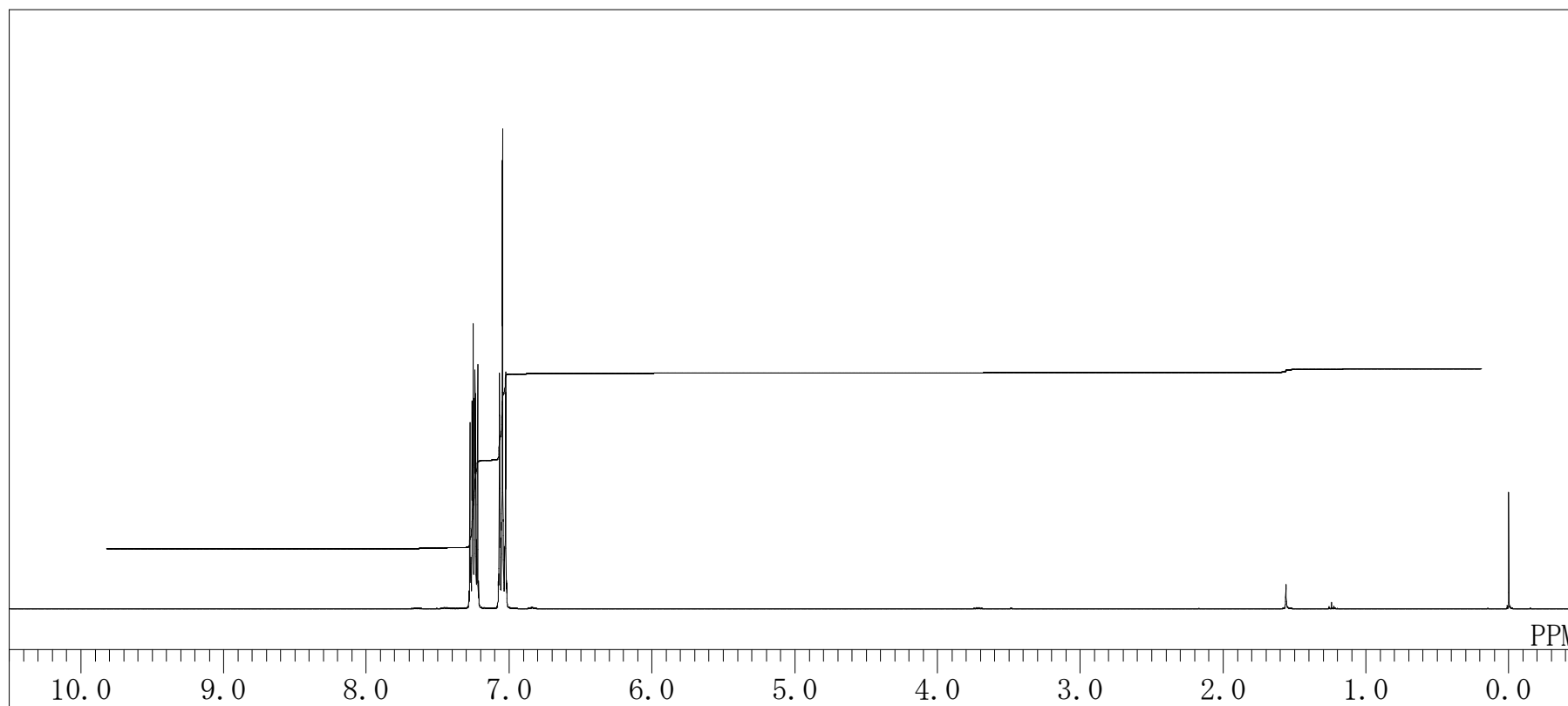
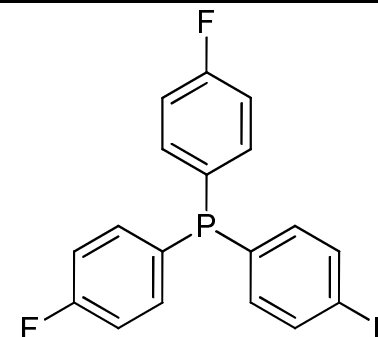
Product No. T2900

Tris(4-fluorophenyl)phosphine

Solvent : CDCl_3

Internal Standard : $\text{Si}(\text{CH}_3)_4$

Measured Temperature : 21.6°C



TOKYO CHEMICAL INDUSTRY CO., LTD.

¹³C-NMR

Product No. T2900

Tris(4-fluorophenyl)phosphine

Solvent : CDCl₃

Internal Standard : CDCl₃

Measured Temperature : 22.1 °C

