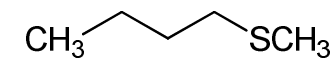


# $^1\text{H-NMR}$

Product No. B0729

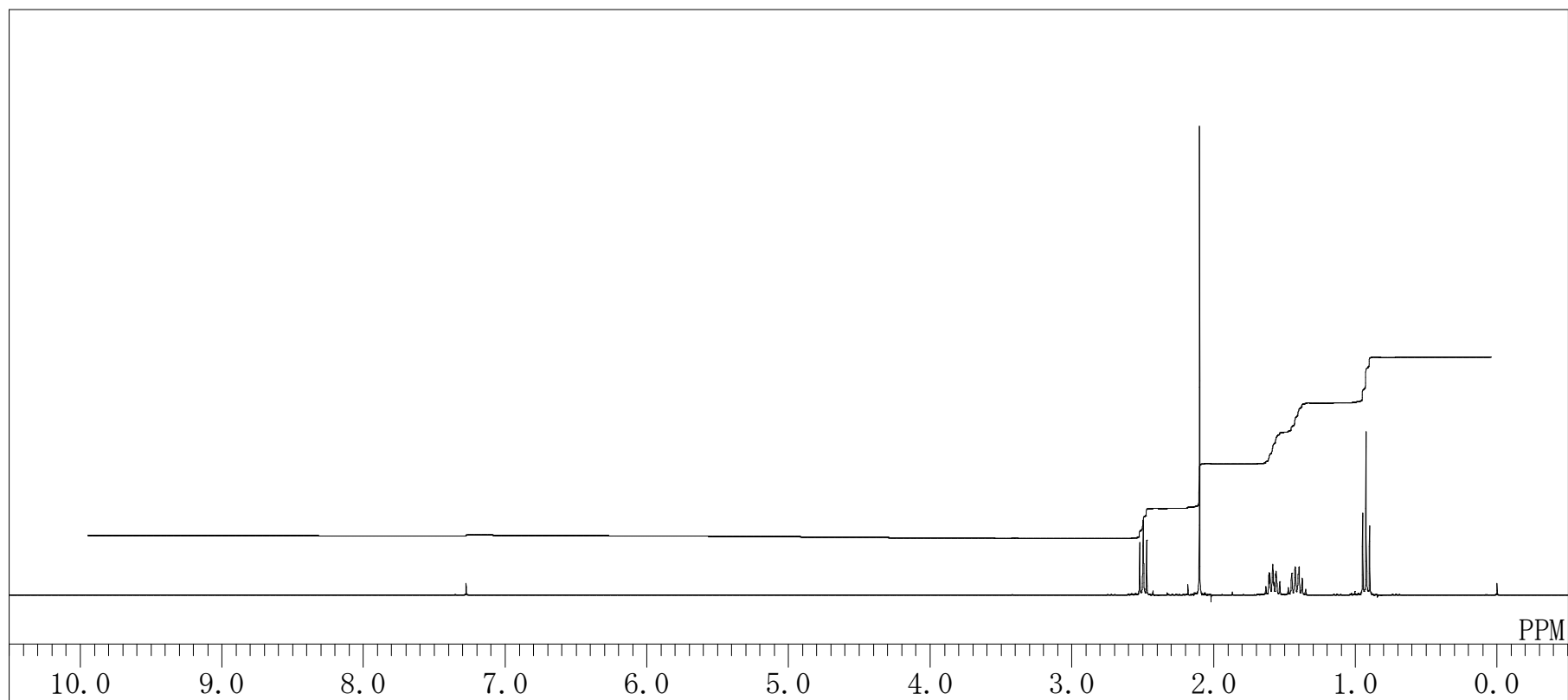
Butyl Methyl Sulfide



Solvent :  $\text{CDCl}_3$

Internal Standard :  $\text{Si}(\text{CH}_3)_4$

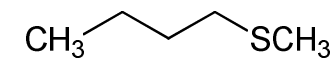
Measured Temperature :  $20.3^\circ\text{C}$



<sup>13</sup>C-NMR

Product No. B0729

Butyl Methyl Sulfide



Solvent : CDCl<sub>3</sub>

Internal Standard : CDCl<sub>3</sub>

Measured Temperature : 20.6 °C

