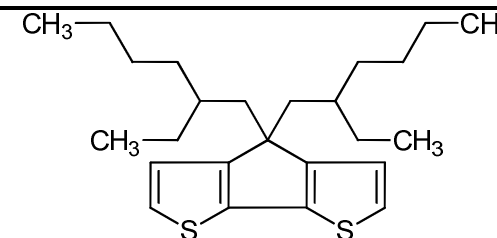


$^1\text{H-NMR}$

Product No. B4102

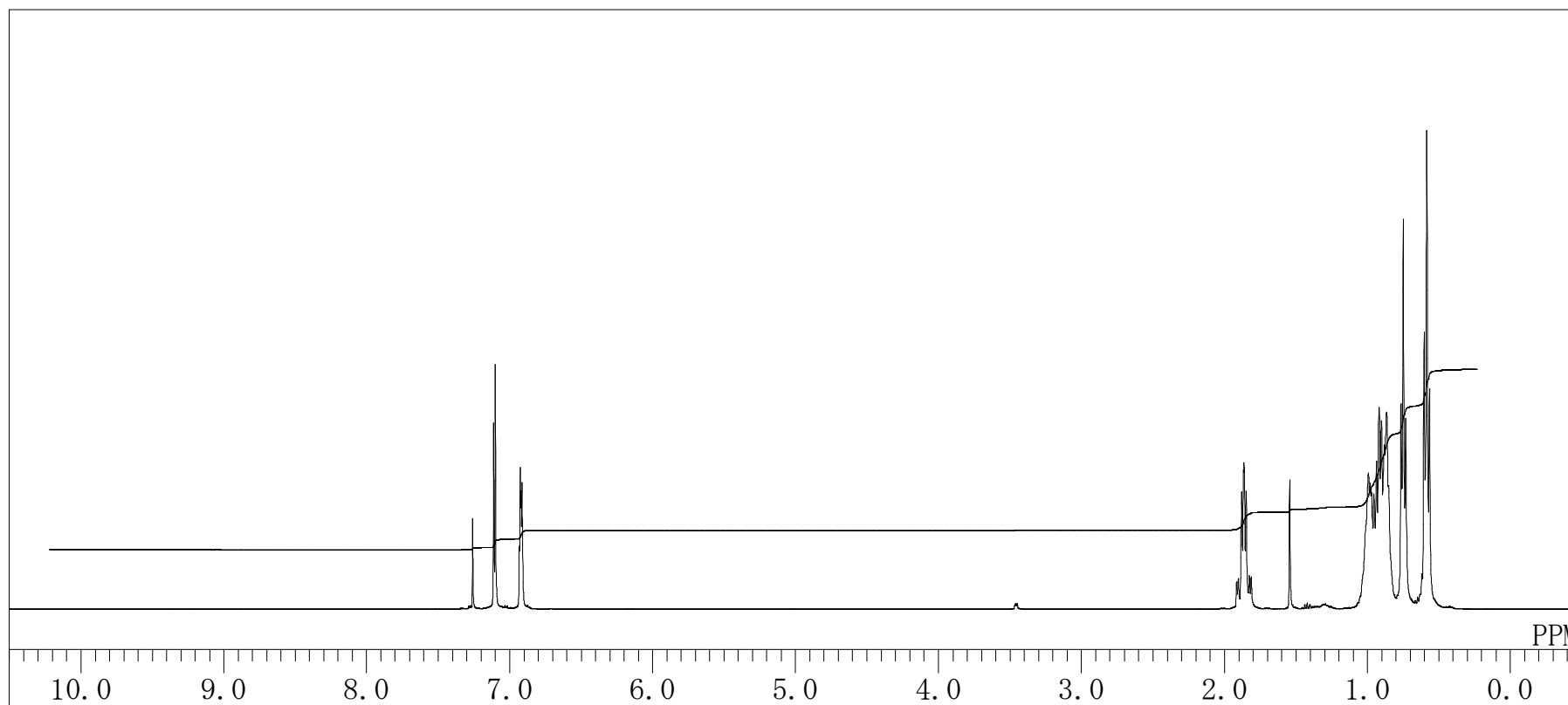
4,4-Bis(2-ethylhexyl)-4*H*-cyclopenta[2,1-*b*:3,4-*b'*]dithiophene



Solvent : CDCl_3

Internal Standard : residual CHCl_3

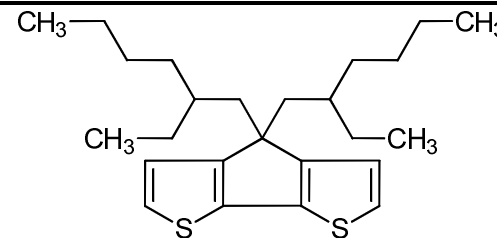
Measured Temperature : 23.7°C



¹³C-NMR

Product No. B4102

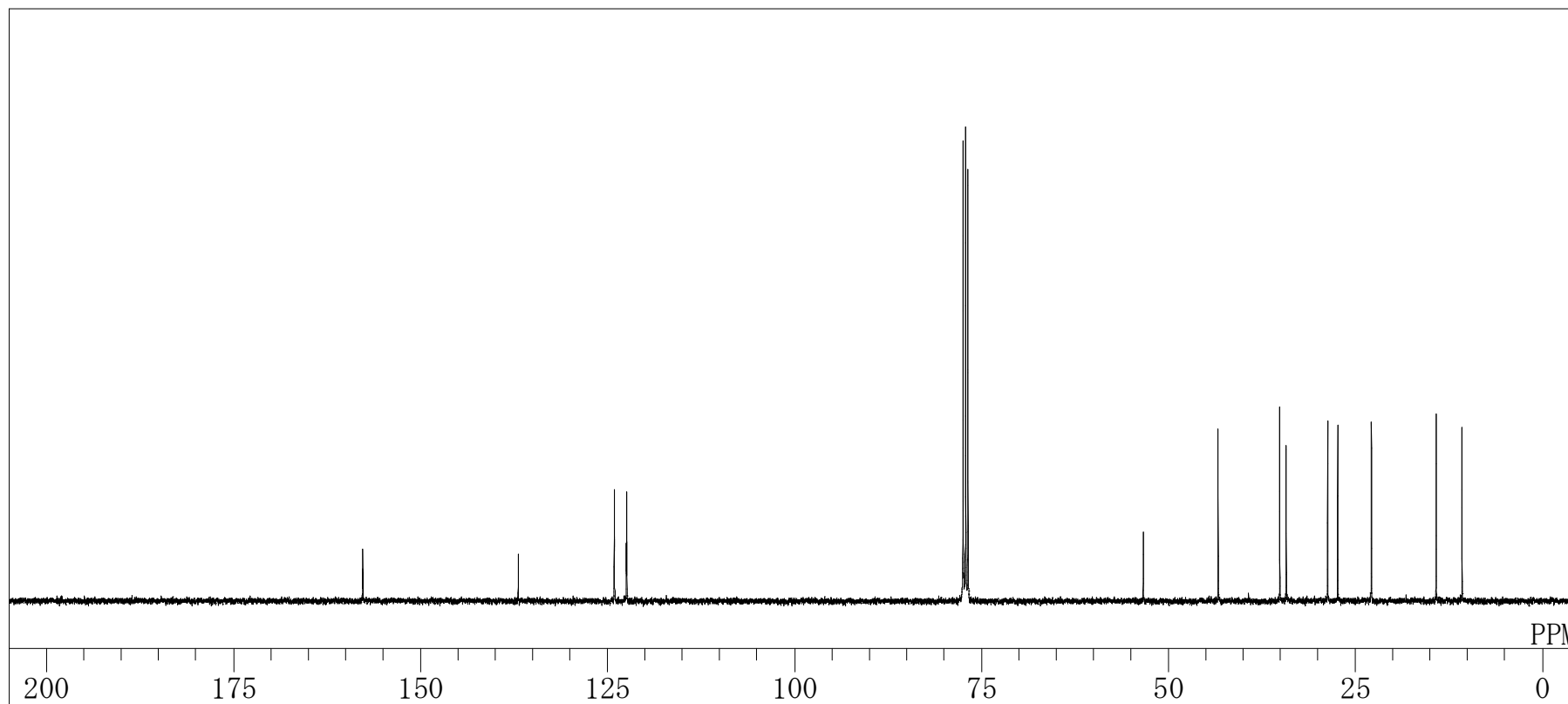
4,4-Bis(2-ethylhexyl)-4*H*-cyclopenta[2,1-*b*:3,4-*b'*]dithiophene



Solvent : CDCl₃

Internal Standard : CDCl₃

Measured Temperature : 24.0 °C



TOKYO CHEMICAL INDUSTRY CO., LTD.