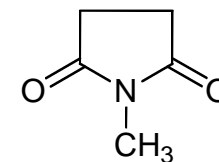


# $^1\text{H-NMR}$

Product No.M2207

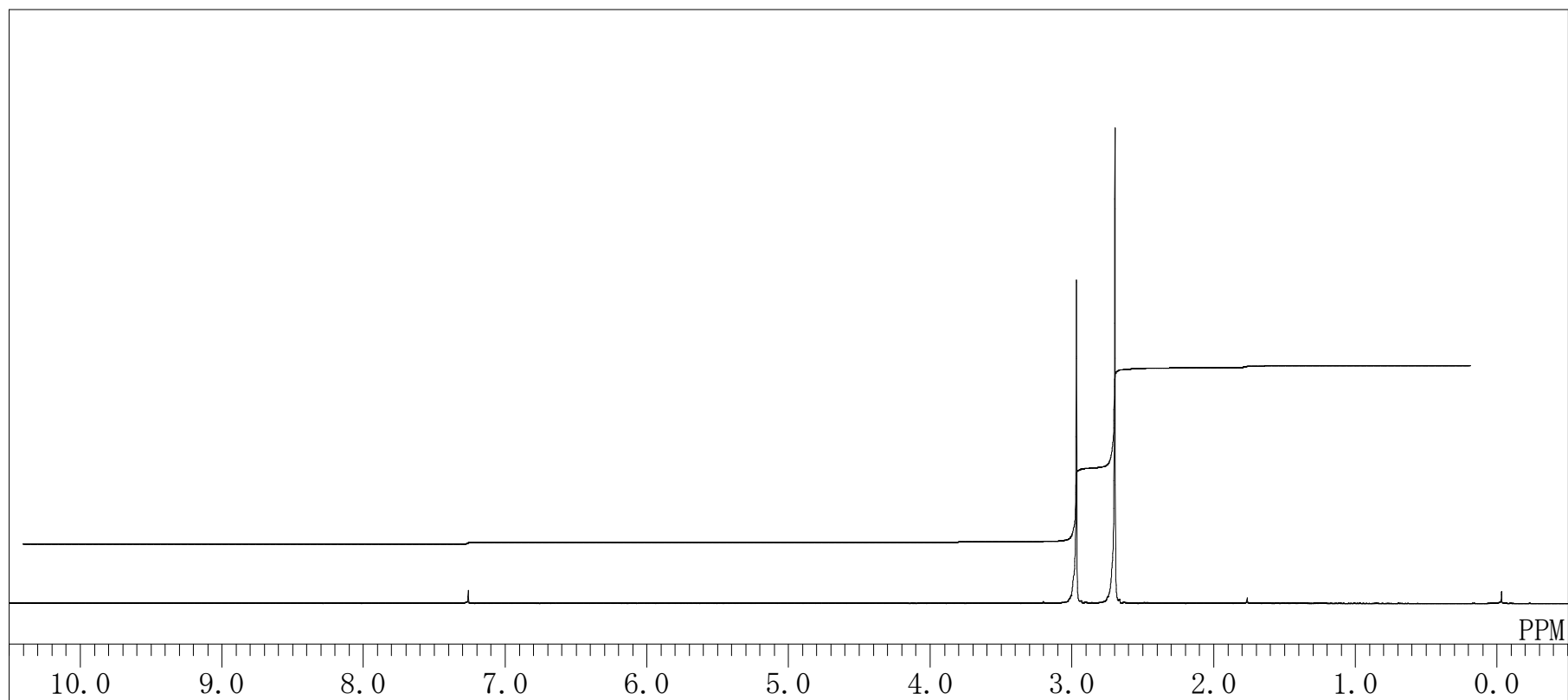
*N*-Methylsuccinimide



Solvent :  $\text{CDCl}_3$

Internal Standard : residual  $\text{CHCl}_3$

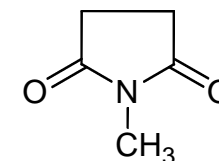
Measured Temperature :  $18.5^\circ\text{C}$



# <sup>13</sup>C-NMR

Product No. M2207

*N*-Methylsuccinimide



Solvent : CDCl<sub>3</sub>

Internal Standard : CDCl<sub>3</sub>

Measured Temperature : 18.6 °C

