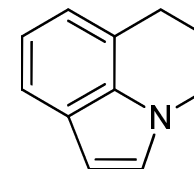


$^1\text{H-NMR}$

Product No. L0274

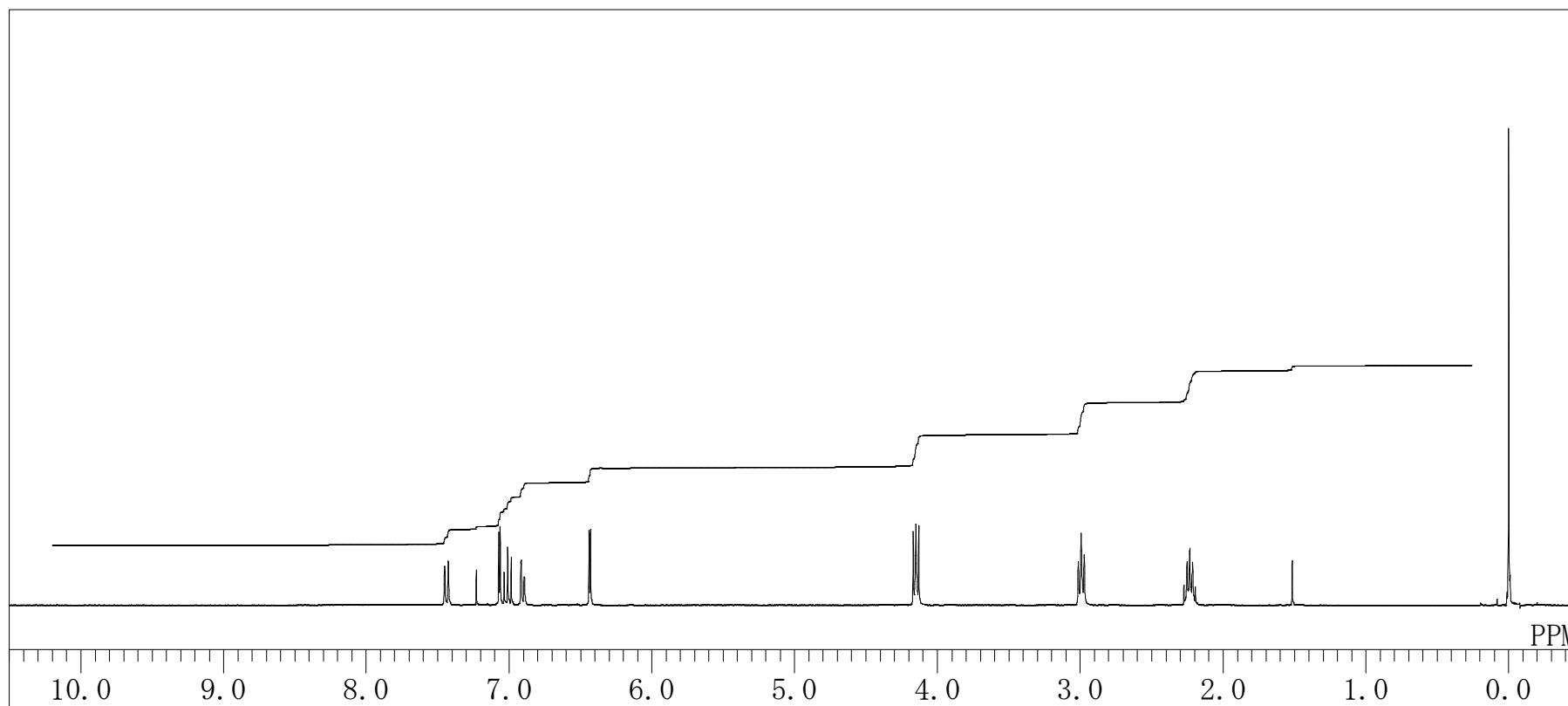
Lilolidine



Solvent : CDCl_3

Internal Standard : $\text{Si}(\text{CH}_3)_4$

Measured Temperature : 20.2°C

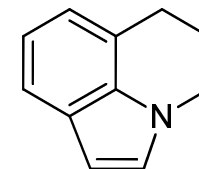


TOKYO CHEMICAL INDUSTRY CO., LTD.

¹³C-NMR

Product No. L0274

Lilolidine



Solvent : CDCl₃

Internal Standard : CDCl₃

Measured Temperature : 20.7 °C

